

CONCEPTUAL LAYOUT
JANUARY 5, 2015



GP Gorrill-Palmer Consulting Engineers, Inc.
 PO Box 1237 Engineering Excellence Since 1998 207-657-6910
 15 Shaker Road FAX 207-657-6912
 Gray, ME 04039 E-Mail: molbo@gorrillpalmer.com

ROUTE 1
CAMDEN STREET IMPROVEMENTS
ROCKLAND, MAINE

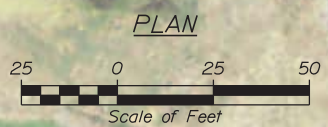
PROJ. MANAGER	D. LETTINGER	BY	DATE
DESIGN-DETAILED	L. HAVU	L. NEWHOUSE	12/14
CHECKED-REVIEWED	D. LETTINGER		12/14
DESIGN-DETAILED			
DESIGN-DETAILED			
REVISIONS 1			
REVISIONS 2			
REVISIONS 3			
REVISIONS 4			
FIELD CHANGES			

ROCKLAND
CAMDEN STREET
CONCEPT PLAN 1

SHEET NUMBER
1
OF 7



CONCEPTUAL LAYOUT
JANUARY 5, 2015



GP Gorrill-Palmer Consulting Engineers, Inc.
 PO Box 1237 Engineering Excellence Since 1998 207-657-6910
 15 Shaker Road FAX 207-657-6912
 Gray, ME 04039 E-Mail: mail@gorrillpalmer.com

ROUTE 1
CAMDEN STREET IMPROVEMENTS
ROCKLAND, MAINE

PROJ. MANAGER	D. LETTINGER	BY	DATE
CHECKED-REVIEWED	L. NEWHOUSE		12/14
DESIGNS-DETAILED	D. LETTINGER		12/14
DESIGNS-DETAILED			
REVISIONS 1			
REVISIONS 2			
REVISIONS 3			
REVISIONS 4			
FIELD CHANGES			

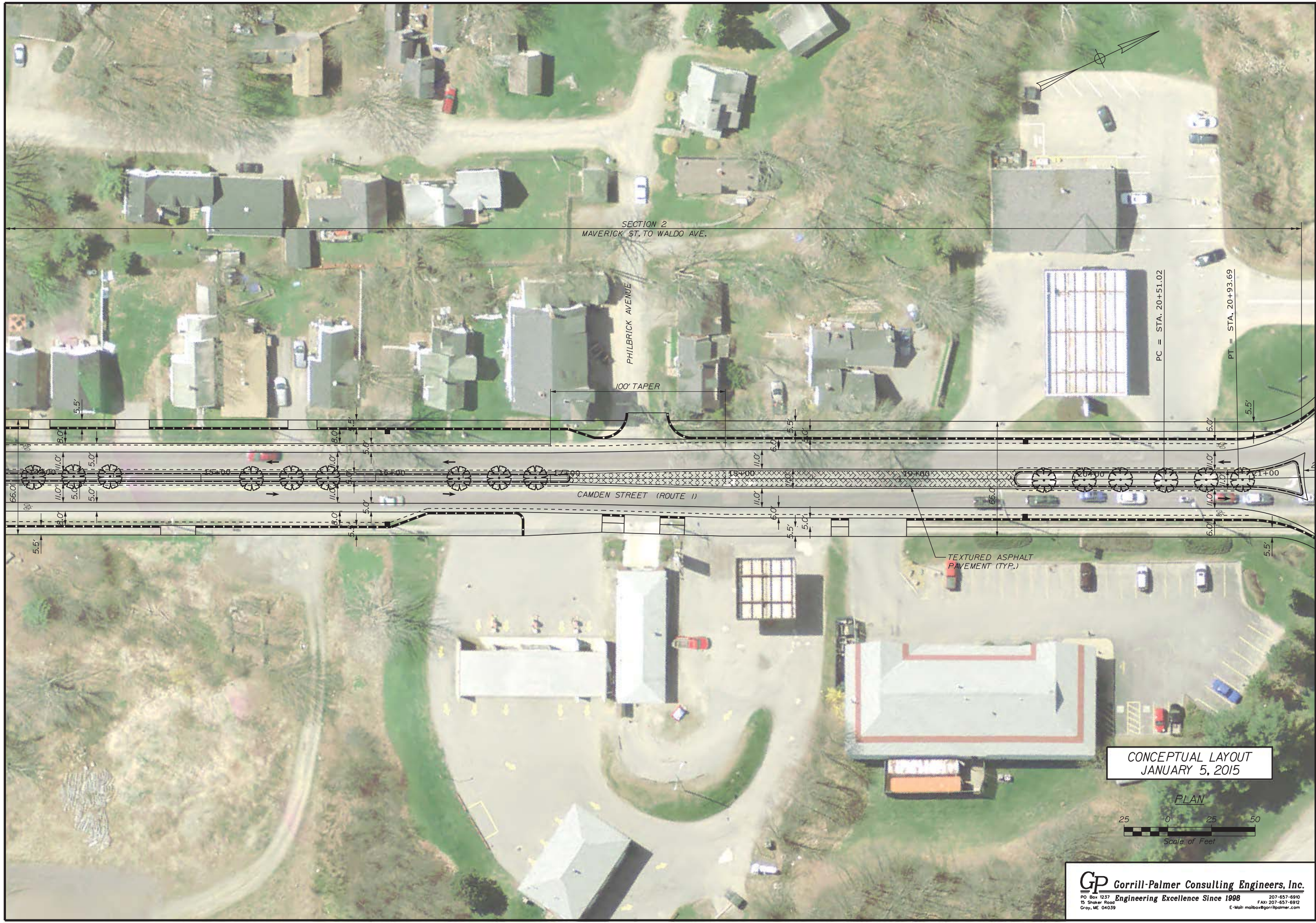
SIGNATURE	P.E. NUMBER	DATE

ROCKLAND
CAMDEN STREET
CONCEPT PLAN 2

SHEET NUMBER

2

OF 7



CONCEPTUAL LAYOUT
JANUARY 5, 2015

PLAN



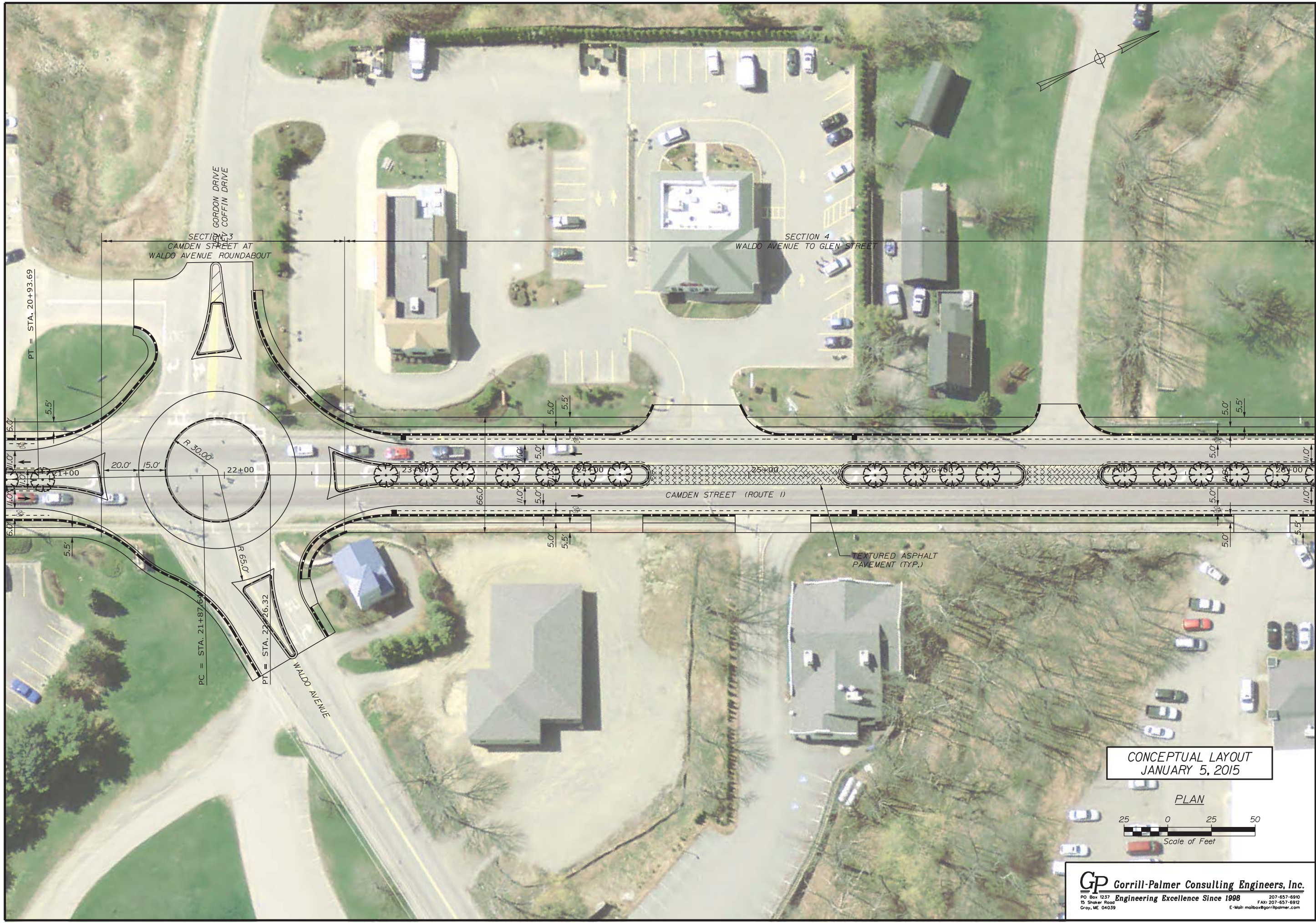
GP Gorrill-Palmer Consulting Engineers, Inc.
 PO Box 1237 Engineering Excellence Since 1998 207-657-6910
 15 Shaker Road FAX: 207-657-6912
 Gray, ME 04039 E-Mail: molbo@gorrillpalmer.com

ROUTE 1
 CAMDEN STREET IMPROVEMENTS
 ROCKLAND, MAINE

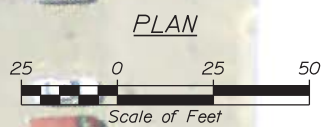
PROJ. MANAGER	D. LETTINGER	BY	L. NEWHOUSE	DATE	12/14
CHECKED-REVIEWED	D. LETTINGER	DESIGN-REVIEWED	D. LETTINGER	SIGNATURE	
DESIGNS-DETAILED		DESIGNS-DETAILED		P.E. NUMBER	
REVISIONS 1		REVISIONS 1		DATE	
REVISIONS 2		REVISIONS 2			
REVISIONS 3		REVISIONS 3			
REVISIONS 4		REVISIONS 4			
FIELD CHANGES					

ROCKLAND
 CAMDEN STREET
 CONCEPT PLAN 3

SHEET NUMBER
3
 OF 7



CONCEPTUAL LAYOUT
JANUARY 5, 2015



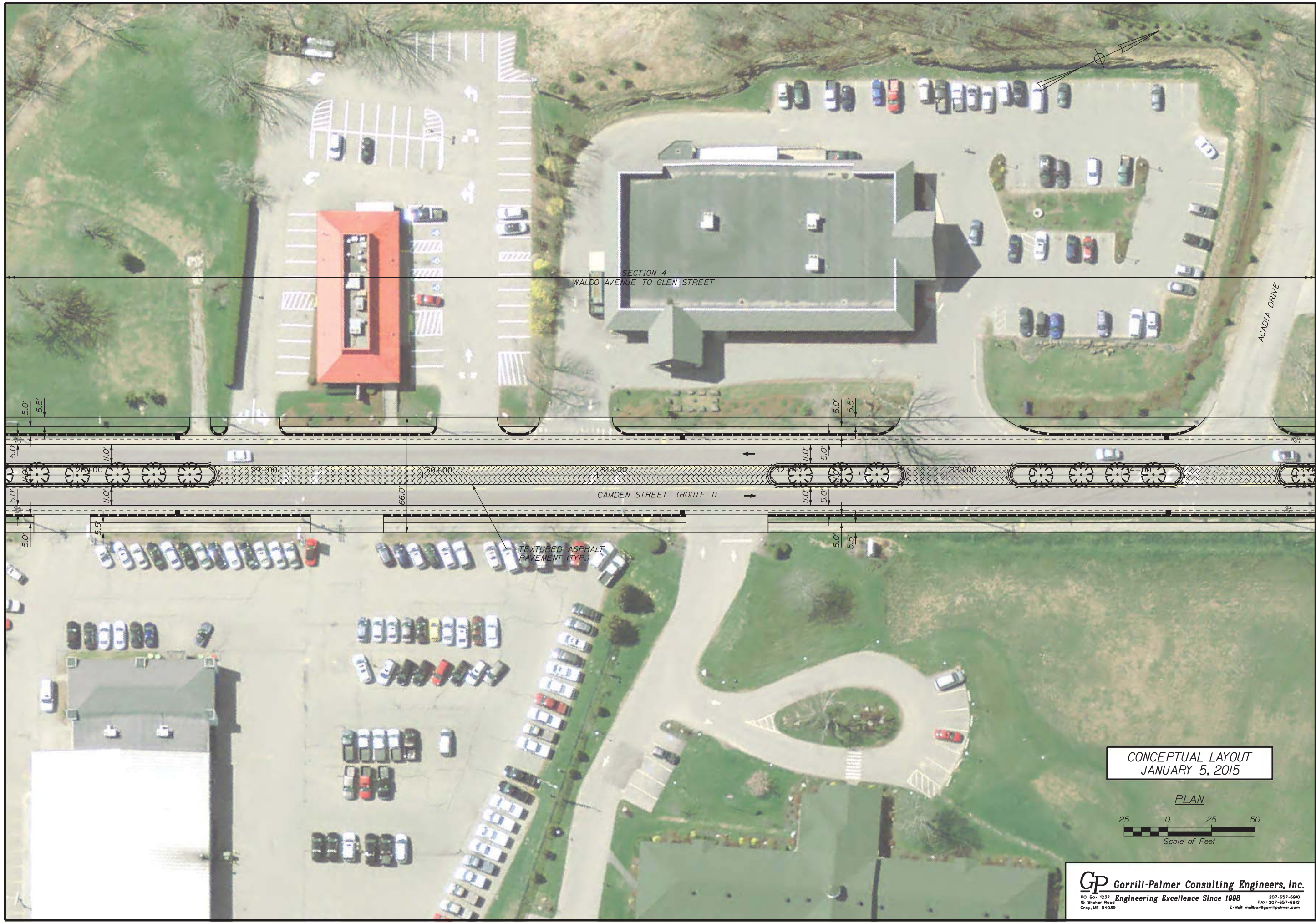
GP Gorrill-Palmer Consulting Engineers, Inc.
 PO Box 1237 Engineering Excellence Since 1998 207-657-6910
 15 Shaker Road FAX: 207-657-6912
 Gray, ME 04039 E-Mail: mailbo@gorrillpalmer.com

ROUTE 1
CAMDEN STREET IMPROVEMENTS
ROCKLAND, MAINE

PROJ. MANAGER	D. LETTINGER	BY	L. NEWHOUSE	DATE	12/14
CHECKED-DETAILED	J. HAVU	DESIGNED-DETAILED	D. LETTINGER	DATE	12/14
DESIGNED-DETAILED		DESIGNED-DETAILED		SIGNATURE	
REVISIONS 1		REVISIONS 1		P.E. NUMBER	
REVISIONS 2		REVISIONS 2		DATE	
REVISIONS 3		REVISIONS 3			
REVISIONS 4		REVISIONS 4			
FIELD CHANGES					

ROCKLAND
CAMDEN STREET
CONCEPT PLAN 4

SHEET NUMBER
4
OF 7

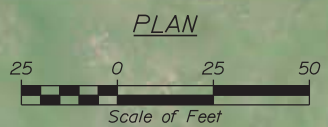


SECTION 4
WALDO AVENUE TO GLEN STREET

CAMDEN STREET (ROUTE 1)

TEXTURED ASPHALT
PAVEMENT (TYP.)

CONCEPTUAL LAYOUT
JANUARY 5, 2015



GP Gorrill-Palmer Consulting Engineers, Inc.
 PO Box 1237 Engineering Excellence Since 1998 207-657-6910
 15 Shaker Road FAX: 207-657-6912
 Gray, ME 04039 E-Mail: malbo@gorrillpalmer.com

ROUTE 1
 CAMDEN STREET IMPROVEMENTS
 ROCKLAND, MAINE

PROJ. MANAGER	D. LETTINGER	BY	DATE
CHECKED-REVIEWED	J. HAVU	L. NEWHOUSE	12/14
DESIGN-DETAILED			12/14
DESIGNS-DETAILED			
REVISIONS 1			
REVISIONS 2			
REVISIONS 3			
REVISIONS 4			
FIELD CHANGES			

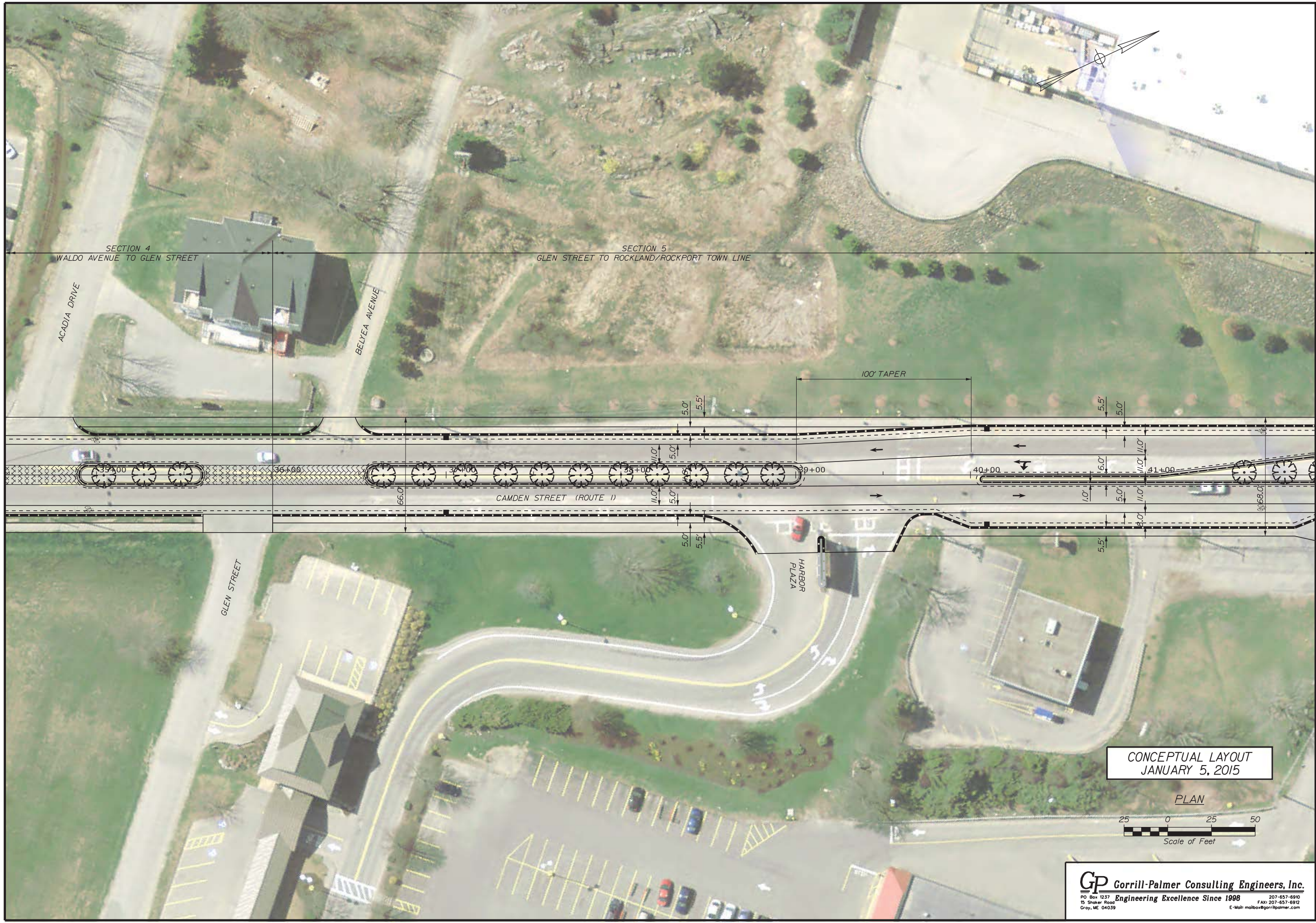
ROCKLAND
 CAMDEN STREET
 CONCEPT PLAN 5

SHEET NUMBER

5

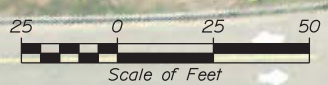
OF 7

Filename: ... \000\Highway\006_Plan_006.dgn
 Division: HIGHWAY
 Username: newhouse
 Date: 1/5/2015



CONCEPTUAL LAYOUT
 JANUARY 5, 2015

PLAN



GP **Gorrill-Palmer Consulting Engineers, Inc.**
 PO Box 1237 Engineering Excellence Since 1998 207-657-6910
 15 Shaker Road FAX: 207-657-6912
 Gray, ME 04133 E-Mail: molbo@gorrillpalmer.com

ROUTE 1
 CAMDEN STREET IMPROVEMENTS
 ROCKLAND, MAINE

PROJ. MANAGER	DATE	BY
D. LETTINGER	12/14	L. NEWHOUSE

CHECKED-REVIEWED	DATE	SIGNATURE
D. LETTINGER	12/14	

DESIGN-DETAILED	DATE	P.E. NUMBER

DESIGN-DETAILED	DATE	DATE

REVISIONS	DATE	FIELD CHANGES
1		
2		
3		
4		

ROCKLAND
 CAMDEN STREET
 CONCEPT PLAN 6

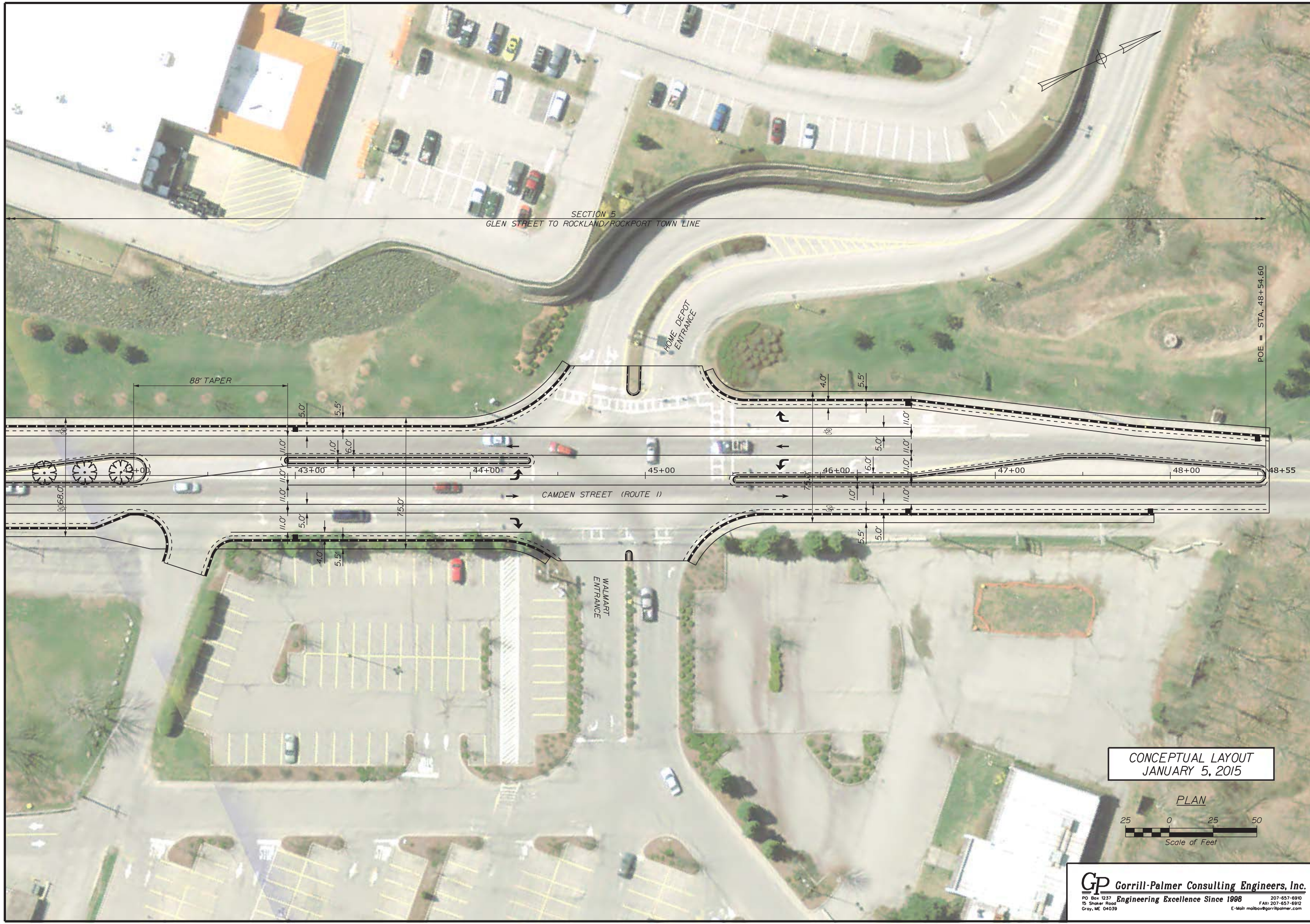
SHEET NUMBER
6
 OF 7

Date: 1/5/2015

Username: newhouse

Division: HIGHWAY

Filename: ... \00\Highway\007_Plan_007.dgn



ROUTE 1
CAMDEN STREET IMPROVEMENTS
ROCKLAND, MAINE

PROJ. MANAGER	D. LETTINGER	BY	L. NEWHOUSE	DATE	12/14
CHECKED-REVIEWED	D. LETTINGER	DESIGN-DETAILED	L. NEWHOUSE	SIGNATURE	12/14
DESIGN-DETAILED		DESIGN-DETAILED		P.E. NUMBER	
REVISIONS 1		REVISIONS 1		DATE	
REVISIONS 2		REVISIONS 2			
REVISIONS 3		REVISIONS 3			
REVISIONS 4		REVISIONS 4			
FIELD CHANGES					

ROCKLAND
CAMDEN STREET
CONCEPT PLAN 7

SHEET NUMBER
7
OF 7

GP Gorrill-Palmer Consulting Engineers, Inc.
 PO Box 1237 Engineering Excellence Since 1998 207-657-6910
 15 Shaker Road FAX: 207-657-6912
 Gray, ME 04039 E-Mail: molbo@gorrillpalmer.com