

Winter Storm Briefing

12-22-13 - 10:30 am

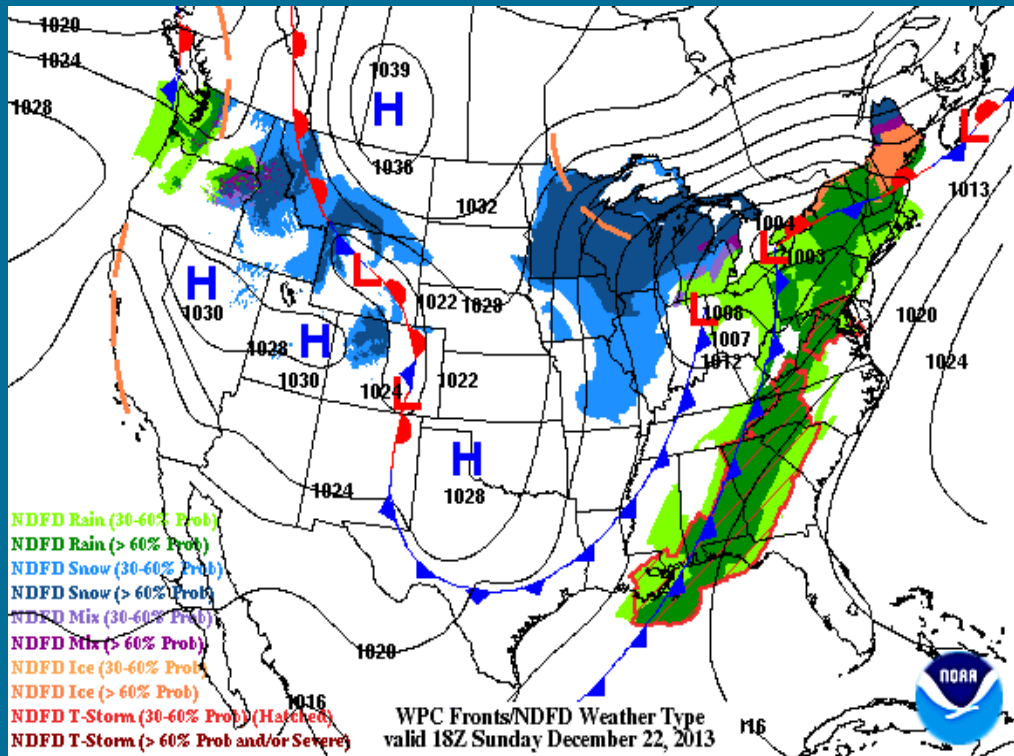
Briefing 7

National Weather Service
Gray, Maine
Weather Briefing

Briefing produced as guidance for local and state government agencies.



Overview



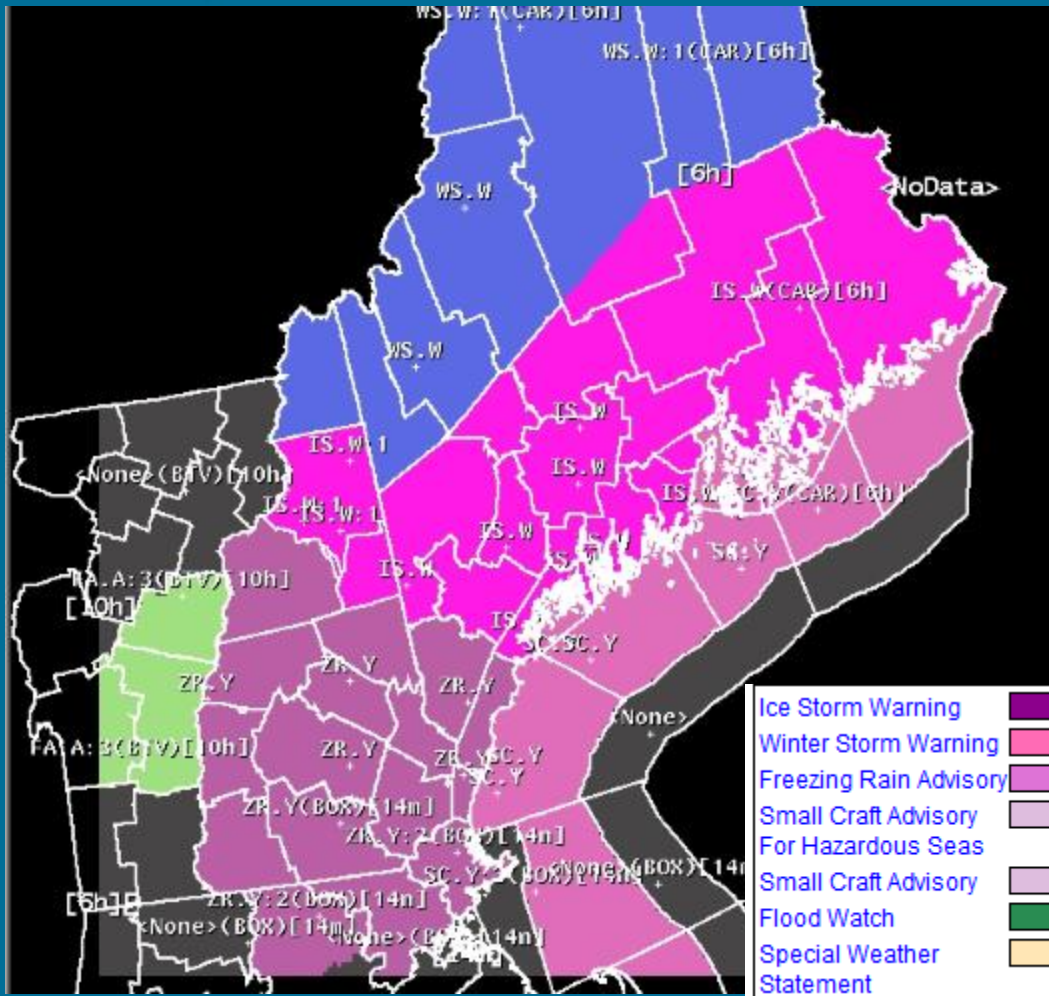
Forecast for Today

Cold air continues to funnel southward as temperatures slowly fall or remain relatively steady across the region today. The front will reach the Massachusetts border before becoming stationary. North of this front...periods of freezing rain and freezing drizzle will fall at times right through Monday morning. The heaviest accumulation of ice will continue to be over south-central Maine (including the Midcoast region) and adjacent eastern New Hampshire. Snow and sleet will continue to accumulate in northern areas.

Confidence Level

Computer models continue to show a lack of consistency with this system in terms of the precipitation amounts, low level temperatures, and timing of the coastal low which will develop tonight and Monday. Freezing rain or freezing drizzle are expected to continue throughout much of the region at times through tonight. On Monday, freezing rain will mainly be confined to southern Maine and southeast New Hampshire as a coastal low moves offshore. The amount of ice accretion will vary from town to town and the final total is still difficult to predict in this complex situation. Although confidence is high that much of the region will see freezing rain, confidence in the exact ice accretion forecast is moderate.

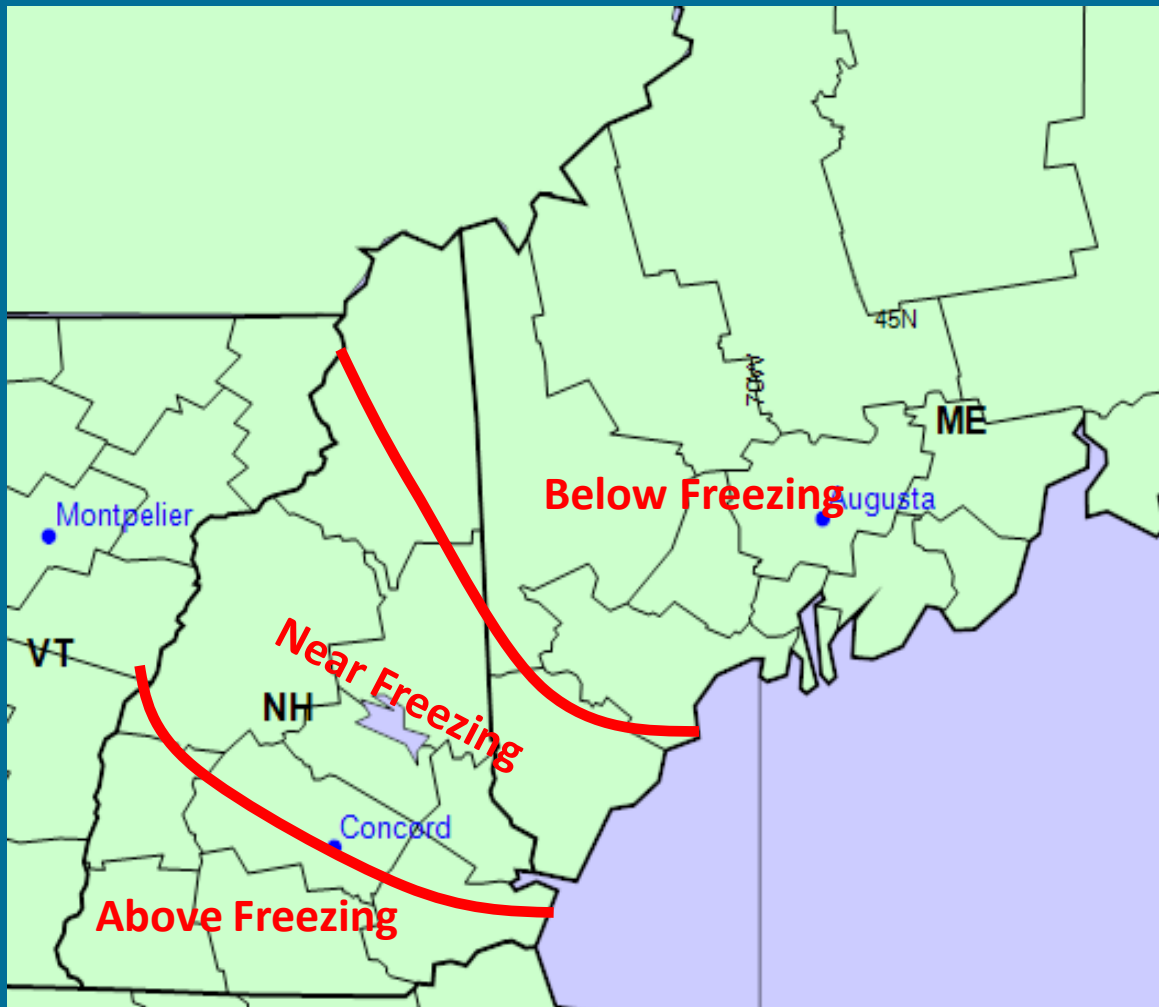
Headlines



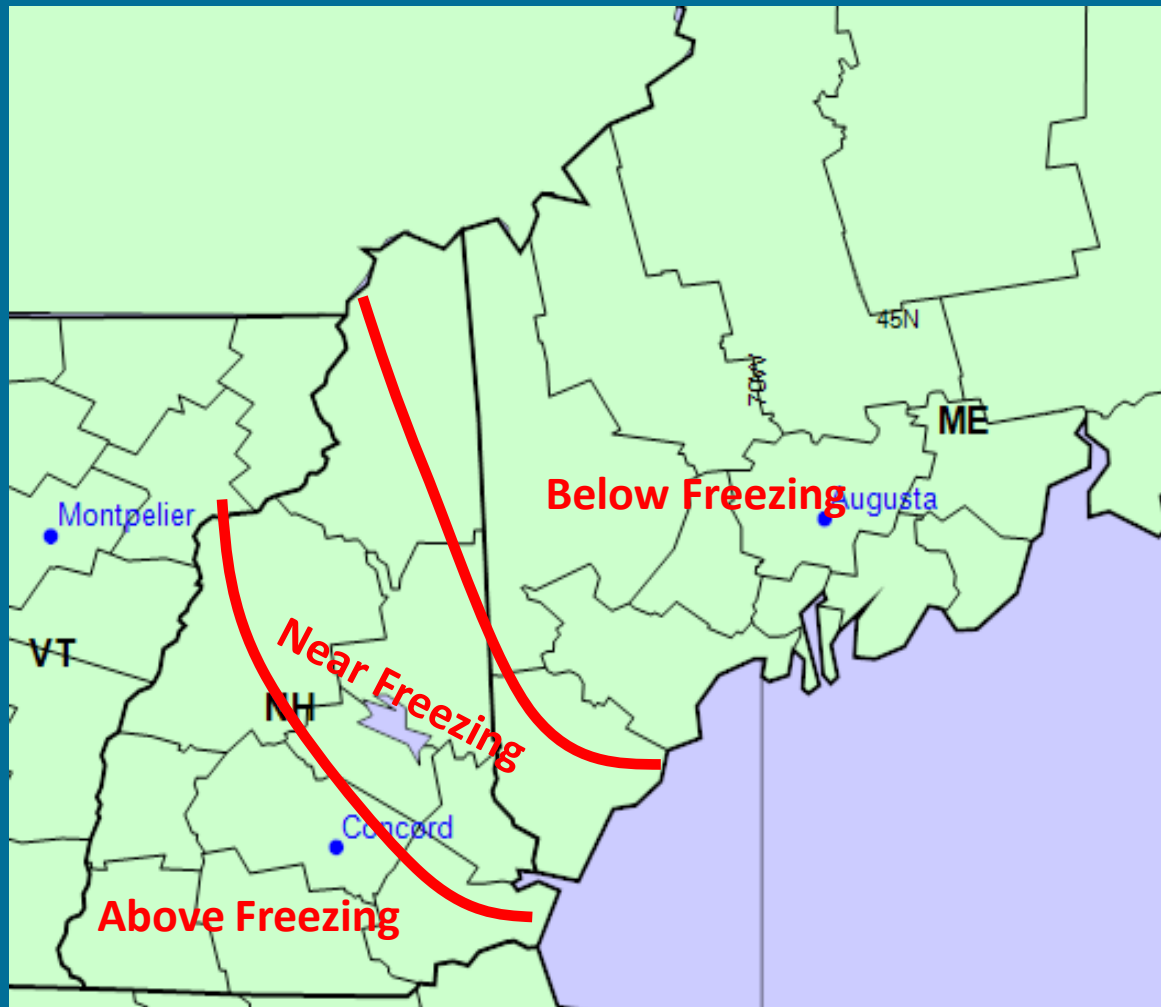
Ice Storm Warnings, Winter Storm Warnings, and Freezing Rain Advisories have been issued for all of Maine and New Hampshire.

Northern areas will continue to see a mix of snow, sleet and freezing rain. Central areas will see mainly freezing rain. Southern areas will see freezing rain, mixing with rain at times.

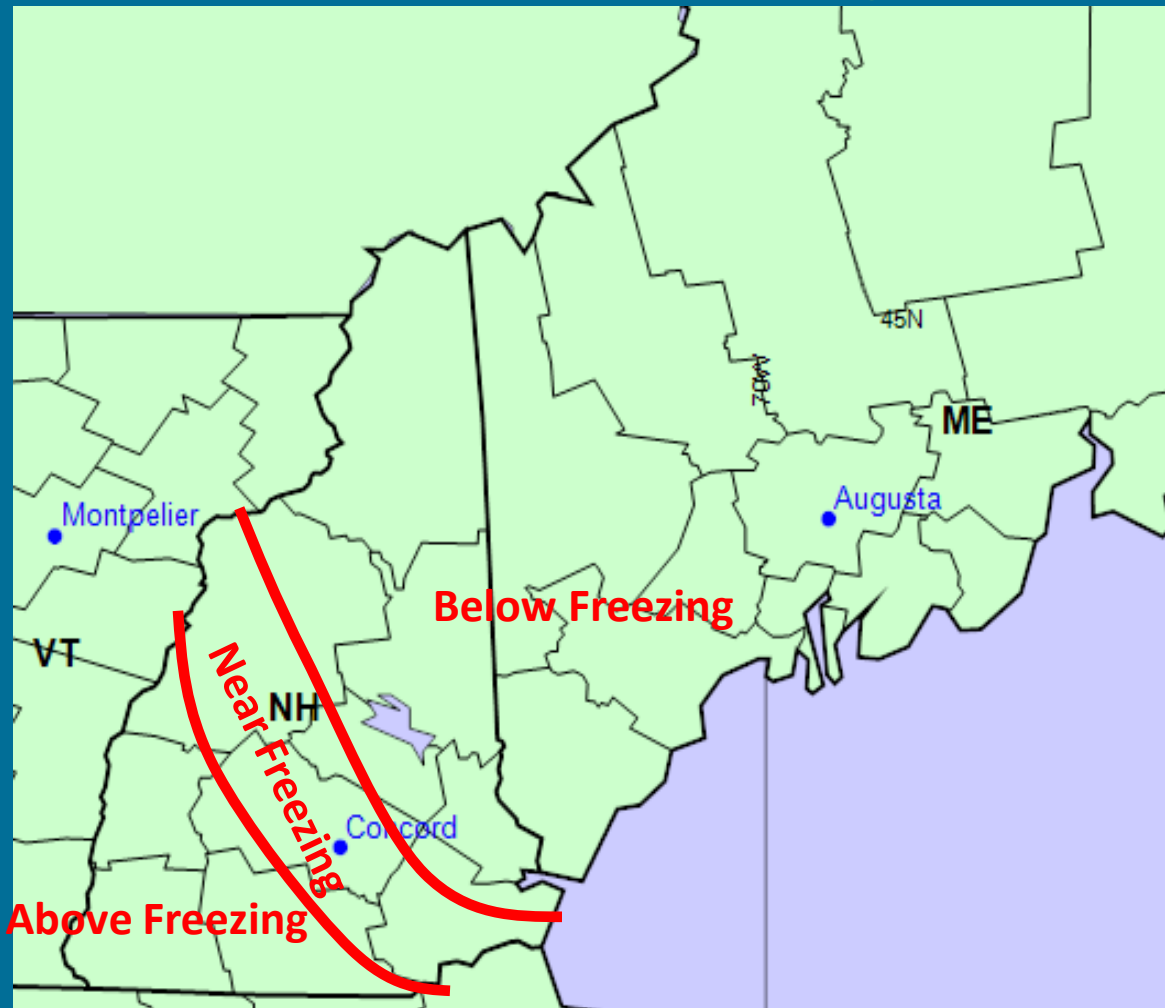
Estimated Timing of Freezing Rain 1 pm Sunday

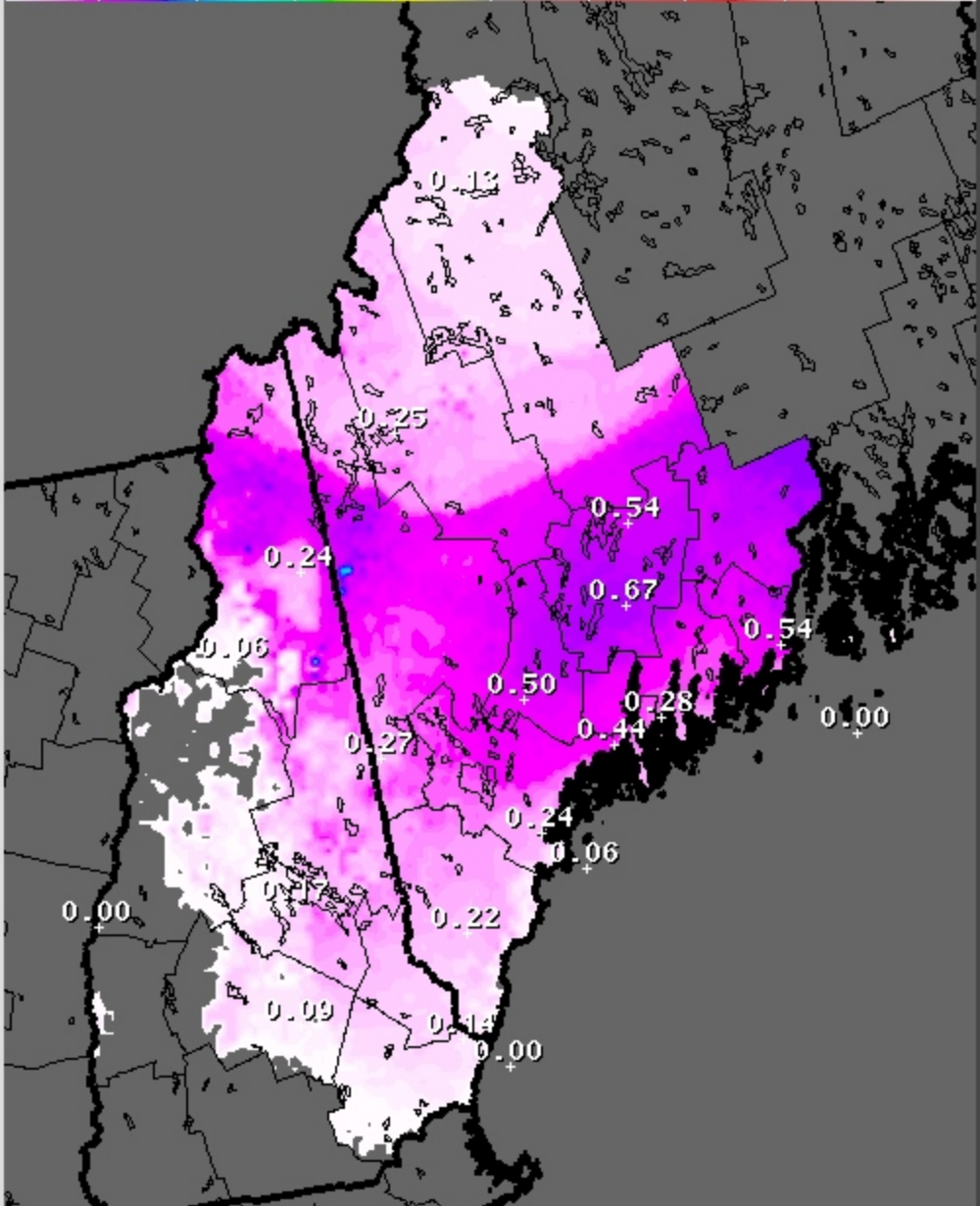


Estimated Timing of Freezing Rain 7 pm Sunday



Estimated Timing of Freezing Rain 7 am Monday





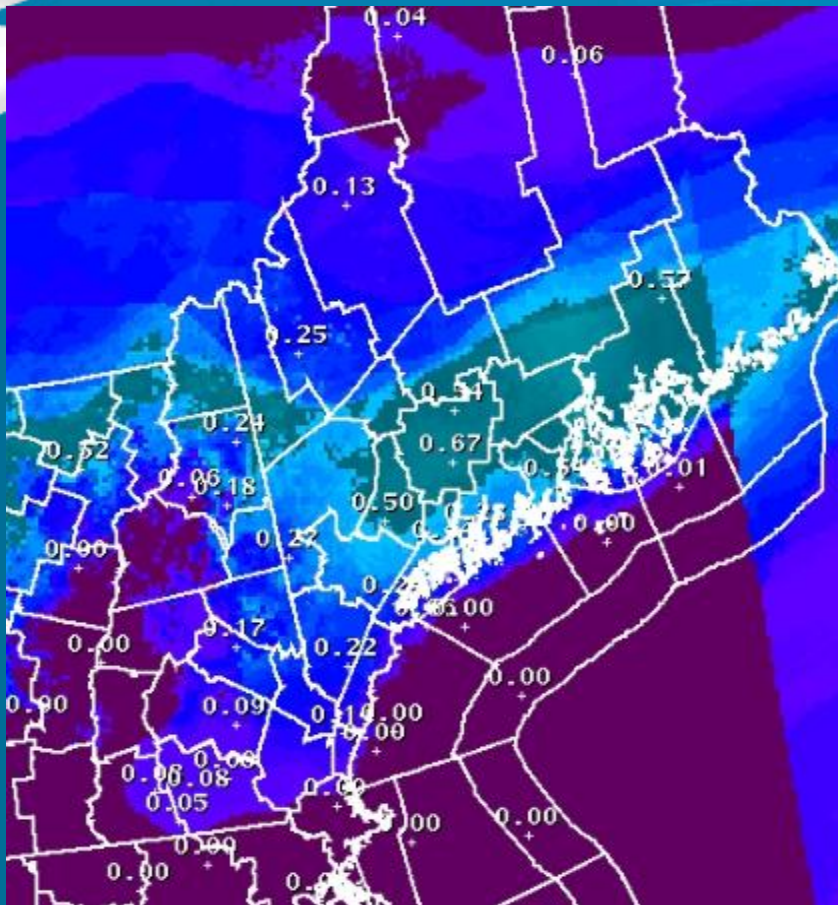
Ice Forecast (in): Ending at 07 AM Mon Dec 23 2013



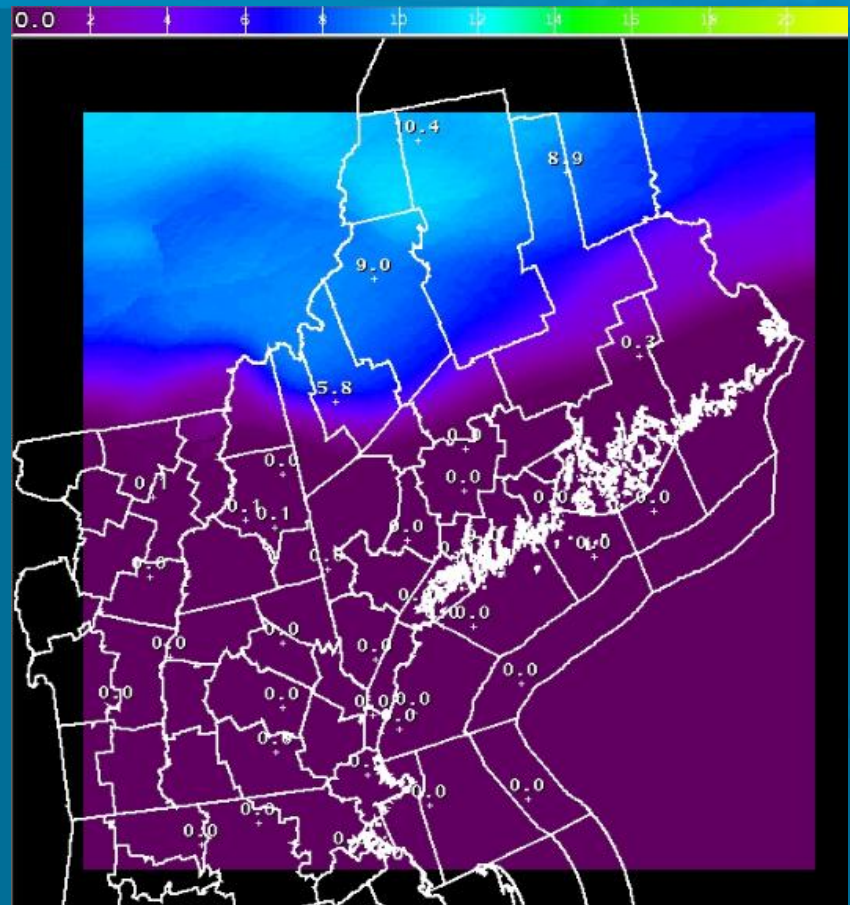
NOAA / National Weather Service



Expected Ice and Snow



Freezing Rain



Snow and Sleet

Please see the latest maps of snowfall and ice accretion on NWS Gray's Emergency Manager's Page for any updates.

<http://weather.gov/gyx/EMwinter>

Impacts

Falling branches will cause scattered to widespread power outages in the Ice Storm Warning area.

In the Freezing Rain Advisory area, scattered power outages are possible due to falling branches.

In both the Advisory and Warning areas, driving will become hazardous tonight and Sunday on untreated roadways. In addition, untreated sidewalks will become slippery.

Carbon monoxide poisoning is common in areas without power due to the improper use of generators and grills.

Monday/Monday Night

Computer models continue to show a wave of low pressure moving along a stationary front offshore Monday and Monday night. This low could bring rain, freezing rain or a mixture of precipitation to the region.

It's too early to know the area affected, how much precipitation will fall, or the type of precipitation, but be aware that another round of winter precipitation is possible Monday and Monday night.

Contact Information

NWS Gray

- Operations: 207-688-3216
- Send Reports to: gyx.skywarn@noaa.gov
- WEB site: <http://www.erh.noaa.gov/gyx/>
- Facebook: <http://www.facebook.com/US.NationalWeatherService.Gray.gov>
- Twitter: @nwsgray